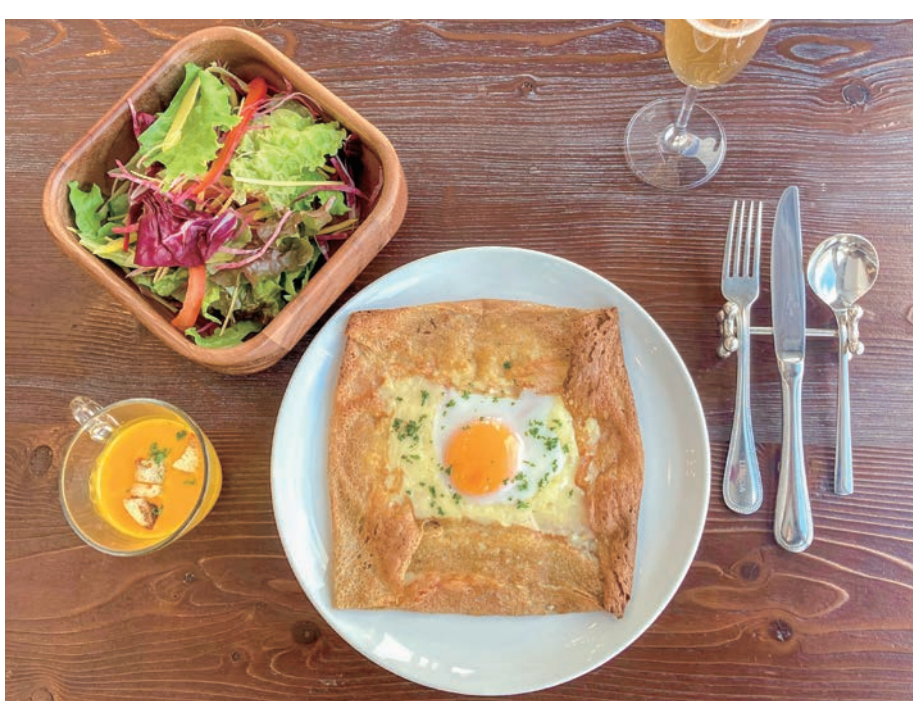


Galette Lunch Menu ¥1,600



Choose a galette you like



Galette Complète

❖ Ham + Cheese + Egg



Galette au Saumon

❖ Salmon + Beet +
Fromage blanc +
Red Onion Pickles



- ❖ Galette of your choice + Salad + Soup + Lupicia's tea
(Black tea or Oolong tea)
- ❖ Glass of beer or Apple Cider or Non-alcoholic Cider + ¥2,000

Side menu

- Apple Cider..... ¥450
- Non-alcoholic Cider..... ¥450
- Gâteau au Chocolat..... ¥200

* Drink menu on the other side.
* All prices are tax excluded.

Yotei Beer

Glass..... ¥450
Mug..... ¥600



DRINK MENU

Soft drink

Blood Orange Juice	¥400
Apple Juice	¥400
Coke	¥400
Ginger Ale	¥400
Coffee	¥400
Lupicia's Oolong tea (cup)	¥700
Lupicia's Black tea (pot)	¥800
Mango Juice (100%)	¥800

Cocktail

Benizakura Gin & Tonic	¥800
Gin & Tonic	¥600
Moscow Mule	¥600
Screw Driver	¥600
Mango Vodka	¥1,000

Wine

<Red wine>

Château Auney l'Hermitage (Merlot / Cabernet Franc / Cabernet Sauvignon) ¥600

Château Thivin Côte de Brouilly Clos Bertrand (Gamay) ¥700

<White wine>

Par Amour Pinot Gris (Pinot Gris) ¥600

Mâcon-Verzé (Chardonnay) ¥800

<Sparkling wine>

Domaine Dutertre Touraine Brut (Chenin blanc) ¥800

Plum Wine

Ume no Yado ¥600

Sake

Niseko ¥700

Shochu

Yuri (potato) ¥700

Kitari (barley) ¥700

Yotei (rice) ¥700

Whisky

Taketsuru pure malt ¥600/30ml

Hibiki ¥700/30ml
- Japanese Harmony

Yoichi single malt ¥600/30ml

Yamazaki - Aged 12 years ¥1,200/30ml

* + ¥100 with soda